

ULTRASONIC GENERATOR

The communication professional  
Power is nothing without control.

pro  
**agm**



NEW

 **rinco**<sup>®</sup>  
ultrasonics

Technology **that moves**

# AGM Pro – The communication PROfessional



**AGM Pro**



The AGM Pro generator is designed for installation in automation lines and special-purpose machines to control ultrasonic actuators and components. Thanks to its slim design, the generator can be incorporated into small spaces in electrical cabinets.

The generator is equipped with an interchangeable module for a whole host of communication protocols. The parameters can also be set via the integrated touch display and the web application **ProConnect**.

Operating frequency:	20 / 30 / 35 / 40 / 70 kHz
Maximum output (W):	100 / 400 / 500 / 600 / 750 / 800 / 900 / 1000 / 1500 / 2000 / 2500 / 3000
Amplitude:	40–100%
Compatible with:	all special actuators CH35-4 cutting head

## THE HIGHEST LEVELS OF REPRODUCIBILITY

Thanks to the option to store up to **8 parameter data sets**

## 6 OPTIONAL WELDING MODES

Time mode, energy mode, welding time AND/OR welding energy, contact cut-off mode, continuous

## CONTROL

Via the system's own PLC

## SOFTSTART AND SOFTSTOP FUNCTION

To gently **augment and attenuate the oscillations** of complex horns

## QUALITY CONTROL

The AGM Pro ultrasonic generator can be used to set a wide range of **limits** that issue a warning or stop the machine

## DIGITAL ERROR CODING

Errors can be split into the following groups: „generator“, „oscillator system“ and „limits“

## REAL-TIME MONITORING

**Follow the welding process live on our computer** with the web application **ProConnect**



## AGM PRO – Communication interfaces

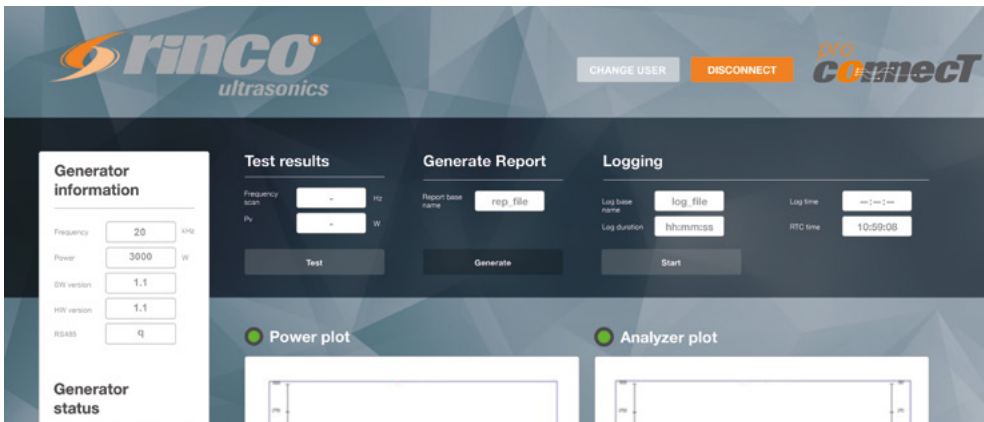


The AGM Pro is equipped with an **interchangeable module**, enabling virtually any communication protocol, such as **EtherNet/IP, Profibus, Profinet, EtherCAT, DeviceNet, CANopen, RS485** and many others, to be implemented. Communication with the PLC is easy to configure and ensured for most devices.



## PROCONNECT – easy and convenient parameter entry

Parameters can be entered via the integrated **touch display** or with the utmost convenience via the **web application ProConnect**.



We would be delighted to assist you should you require further information. Contact us at: [info@rincoultrasonics.com](mailto:info@rincoultrasonics.com) or on +41 (0)71 466 41 00.

## FIELDS OF APPLICATION



**AUTOMOTIVE**



**HIGH-TECH**



**PACKAGING**



**FOOD**



**NON-WOVEN & TEXTILE**



**MEDICAL**

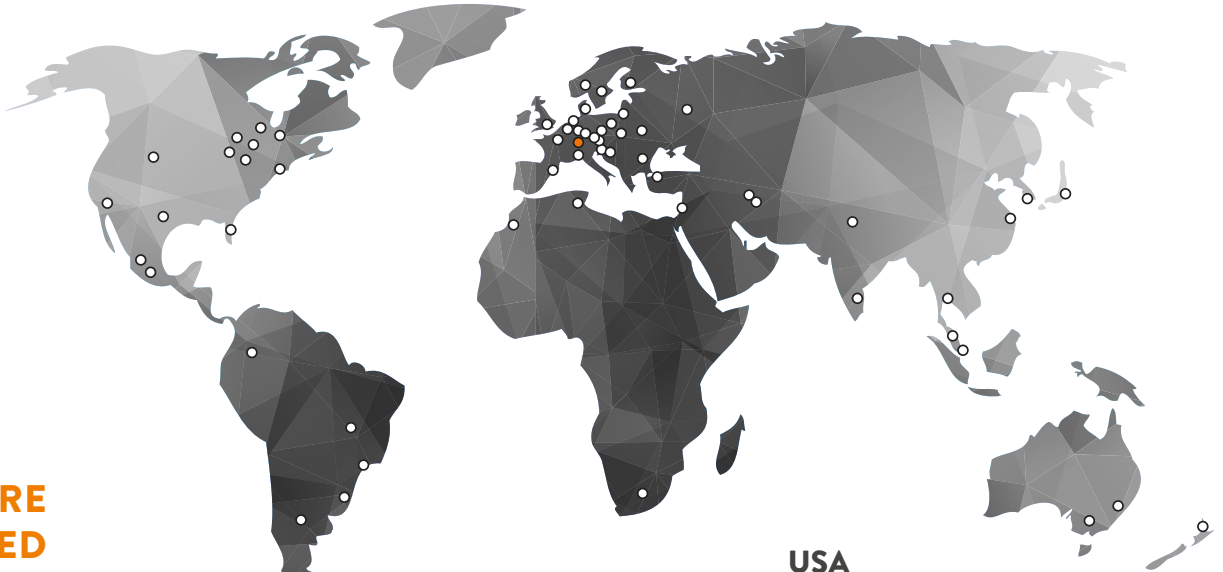


**HOUSEHOLD**

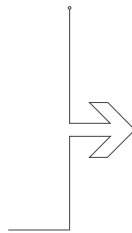


**COSMETICS**

**OPERATING MODES:**  
TIME MODE  
ENERGY MODE  
TIME AND ENERGY  
TIME OR ENERGY  
CONTACT CUT-OFF MODE  
CONTINUOUS



**WE ARE  
FOCUSED  
COMMITTED  
GLOBAL  
LOCAL**



## EUROPE

---

### SWITZERLAND

[rincoultrasonics.ch](http://rincoultrasonics.ch)

---

### GERMANY

[rincoultrasonics.de](http://rincoultrasonics.de)

---

### FRANCE

[rinco-france.com](http://rinco-france.com)

---

### SPAIN

[rincoultrasonics.es](http://rincoultrasonics.es)

---

### ITALY

[rincoultrasonics.it](http://rincoultrasonics.it)

---

### SWEDEN

[rincoultrasonics.se](http://rincoultrasonics.se)

---

### DENMARK

[rincoultrasonics.dk](http://rincoultrasonics.dk)

## USA

---

[rinco-usa.com](http://rinco-usa.com)

## ASIA

---

### CHINA

[rincochina.com](http://rincochina.com)

---

### INDIA

[rincoindia.com](http://rincoindia.com)

---

### MALAYSIA

[rincoultrasonics.com.my](http://rincoultrasonics.com.my)

---

### SINGAPORE

[crest-ultrasonics.com](http://crest-ultrasonics.com)

---

### THAILAND

[crest-ultrasonics.com](http://crest-ultrasonics.com)

---

### JAPAN

[uthe.co.jp](http://uthe.co.jp)



CONTACT US FOR MORE INFORMATION

**[rincoultrasonics.com](http://rincoultrasonics.com)**  
**[info@rincoultrasonics.com](mailto:info@rincoultrasonics.com)**  
**+41 71 466 41 00**

Industriestrasse 4  
CH-8590 Romanshorn  
Switzerland

